

Test Report

No: 10261554(3a)

Date: 23-Feb-12

Page 1 of 23

LHT HOLDINGS LTD
No.27, Sungei Kadut Street 1, Singapore 729335

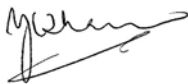
The following sample(s) was/were submitted and identified by/on behalf of the client as:

Sample Description : Ink (stencil ink)

Sample Receiving Date : 10-Feb-12
Testing Period : 10-Feb-12 to 22-Feb-12

Test Result(s) : Please refer to next page(s).

Signed for and on behalf of
SGS Testing & Control Services Singapore Pte Ltd



Y.C. Tham
Laboratory Manager

Test Location: 26 Ayer Rajah Crescent, #07-08, Singapore 139944

This document is issued by the Company under its General Conditions of Service accessible at www.sgs.com/terms_and_conditions.htm and, for electronic format documents, subject to Terms and Conditions for Electronic Documents at www.sgs.com/terms_e-document.htm. Attention is drawn to the limitation of liability, indemnification and jurisdiction issues defined therein. Any holder of this document is advised that information contained hereon reflects the Company's findings at the time of its intervention only and within the limits of Client's instructions, if any. The Company's sole responsibility is to its Client and this document does not exonerate parties to a transaction from exercising all their rights and obligations under the transaction documents. Any unauthorized alteration, forgery or falsification of the content or appearance of this document is unlawful and offenders may be prosecuted to the fullest extent of the law. Unless otherwise stated the results shown in this test report refer only to the sample(s) tested and such sample(s) are retained for 30 days only. This document cannot be reproduced except in full, without prior approval of the Company.

Test Result(s):

Sample Description : Ink (stencil ink)

Test Item(s):	Unit	Method	Results	MDL
2-(3,5-di-tert-butyl-2-hydroxyphenyl)-2H-benzotriazole* (CAS No.: 003846-71-7)	mg/kg	With reference to US EPA 3540C method. Analysis was performed by GC/MS.	n.d.	5
Perfluorooctane Sulfonates (PFOS)* – Acid, Metal Salt, Amide	mg/kg	With reference to US EPA 3540C: 1996 method for PFOS Content. Analysis was performed by LC/MS.	n.d.	10
Bromomethane* (CAS No.: 74-83-9)	mg/kg	With reference to US EPA 5021 method. Analysis was performed by GC/MS.	n.d.	1
Bromochloromethane* (CAS No.: 74-97-5)	mg/kg	With reference to US EPA 5021 method. Analysis was performed by GC/MS.	n.d.	1
Sulfur Hexafluoride(SF6) * (CAS No.: 2551-62-4)	mg/kg	With reference to US EPA 5021 method. Analysis was performed by GC/MS.	n.d.	1
Formaldehyde* (CAS No.:50-00-0)	mg/kg	With reference to ISO 17226-1 (2008) method. Analysis was performed by HPLC/DAD.	n.d.	3
Organic-tin compounds*				
Tributyl Tin (TBT) (CAS No.: 000688-73-3)	mg/kg	With reference to DIN 38407-13. Analysis was performed by GC/FPD.	n.d.	0.03
Triphenyl Tin (TphT) (CAS No.: 000668-34-8)	mg/kg	With reference to DIN 38407-13. Analysis was performed by GC/FPD.	n.d.	0.03
Dibutyl Tin (DBT)	mg/kg	With reference to DIN 38407-13. Analysis was performed by GC/FPD.	n.d.	0.03
Diocetyl Tin (DOT)	mg/kg	With reference to DIN 38407-13. Analysis was performed by GC/FPD.	n.d.	0.03
Tributyl Tin Oxide (TBTO)*** (CAS No.:56-35-9)	mg/kg	With reference to DIN 38407-13. Analysis was performed by GC/FPD.	n.d.	-
Asbestos*				
Actinolite (CAS No.: 77536-66-4)	%	With reference to EPA 600/R-93/116 method. Analysis was performed by SM,PLM and XRD.	Negative	1
Amosite (CAS No.: 12172-73-5)	%	With reference to EPA 600/R-93/116 method. Analysis was performed by SM,PLM and XRD.	Negative	1
Anthophyllite (CAS No.: 77536-67-5)	%	With reference to EPA 600/R-93/116 method. Analysis was performed by SM,PLM and XRD.	Negative	1
Chrysotile (CAS No.:12001-29-5)	%	With reference to EPA 600/R-93/116 method. Analysis was performed by SM,PLM and XRD.	Negative	1
Crocidolite (CAS No.: 12001-28-4)	%	With reference to EPA 600/R-93/116 method. Analysis was performed by SM,PLM and XRD.	Negative	1
Tremolite (CAS No.: 77536-68-6)	%	With reference to EPA 600/R-93/116 method. Analysis was performed by SM,PLM and XRD.	Negative	1

Test Location: 26 Ayer Rajah Crescent, #07-08, Singapore 139944

This document is issued by the Company under its General Conditions of Service accessible at www.sgs.com/terms_and_conditions.htm and, for electronic format documents, subject to Terms and Conditions for Electronic Documents at www.sgs.com/terms_e-document.htm. Attention is drawn to the limitation of liability, indemnification and jurisdiction issues defined therein. Any holder of this document is advised that information contained hereon reflects the Company's findings at the time of its intervention only and within the limits of Client's instructions, if any. The Company's sole responsibility is to its Client and this document does not exonerate parties to a transaction from exercising all their rights and obligations under the transaction documents. Any unauthorized alteration, forgery or falsification of the content or appearance of this document is unlawful and offenders may be prosecuted to the fullest extent of the law. Unless otherwise stated the results shown in this test report refer only to the sample(s) tested and such sample(s) are retained for 30 days only. This document cannot be reproduced except in full, without prior approval of the Company.

Test Result(s):

Sample Description : Ink (stencil ink)

Test Item(s):	Unit	Method	Results	MDL
AZO*				
1): 4-AMINODIPHENYL (CAS No.: 92-67-1)	mg/kg	With reference to LFGB 82.02-2. Analysis was performed by GC/MS.	n.d.	3
2): BENZIDINE (CAS No.:92-87-5)	mg/kg	With reference to LFGB 82.02-2. Analysis was performed by GC/MS.	n.d.	3
3): 4-CHLORO-O-TOLUIDINE (CAS No.: 95-69-2)	mg/kg	With reference to LFGB 82.02-2. Analysis was performed by GC/MS.	n.d.	3
4): 2-NAPHTHYLAMINE (CAS No.: 000091-59-8)	mg/kg	With reference to LFGB 82.02-2. Analysis was performed by GC/MS.	n.d.	3
5): O-AMINOAZOTOLUENE (CAS No.: 97-56-3)	mg/kg	With reference to LFGB 82.02-2. Analysis was performed by GC/MS.	n.d.	3
6): 2-AMINO-4-NITROTOLUENE (CAS No.: 99-55-8)	mg/kg	With reference to LFGB 82.02-2. Analysis was performed by GC/MS.	n.d.	3
7): P-CHLOROANILINE (CAS No.: 106-47-8)	mg/kg	With reference to LFGB 82.02-2. Analysis was performed by GC/MS.	n.d.	3
8): 2,4-DIAMINOANISOLE (CAS No.: 615-05-4)	mg/kg	With reference to LFGB 82.02-2. Analysis was performed by GC/MS.	n.d.	3
9): 4,4'-DIAMINODIPHENYLMETHANE (CAS No.: 101-77-9)	mg/kg	With reference to LFGB 82.02-2. Analysis was performed by GC/MS.	n.d.	3
10): 3,3'-DICHLOROBENZIDINE (CAS No.: 91-94-1)	mg/kg	With reference to LFGB 82.02-2. Analysis was performed by GC/MS.	n.d.	3
11): 3,3'-DIMETHOXYBENZIDINE (CAS No.: 119-90-4)	mg/kg	With reference to LFGB 82.02-2. Analysis was performed by GC/MS.	n.d.	3
12): 3,3'-DIMETHYLBENZIDINE (CAS No.:119-93-7)	mg/kg	With reference to LFGB 82.02-2. Analysis was performed by GC/MS.	n.d.	3
13): 3,3'-DIMETHYL-4,4'-DIAMINODIPHENYLMETHANE (CAS No.: 838-88-0)	mg/kg	With reference to LFGB 82.02-2. Analysis was performed by GC/MS.	n.d.	3

Test Location: 26 Ayer Rajah Crescent, #07-08, Singapore 139944

This document is issued by the Company under its General Conditions of Service accessible at www.sgs.com/terms_and_conditions.htm and, for electronic format documents, subject to Terms and Conditions for Electronic Documents at www.sgs.com/terms_e-document.htm. Attention is drawn to the limitation of liability, indemnification and jurisdiction issues defined therein. Any holder of this document is advised that information contained hereon reflects the Company's findings at the time of its intervention only and within the limits of Client's instructions, if any. The Company's sole responsibility is to its Client and this document does not exonerate parties to a transaction from exercising all their rights and obligations under the transaction documents. Any unauthorized alteration, forgery or falsification of the content or appearance of this document is unlawful and offenders may be prosecuted to the fullest extent of the law. Unless otherwise stated the results shown in this test report refer only to the sample(s) tested and such sample(s) are retained for 30 days only. This document cannot be reproduced except in full, without prior approval of the Company.

Test Result(s):

Sample Description : Ink (stencil ink)

Test Item(s):	Unit	Method	Results	MDL
14): P-CRESIDINE (2-METHOXY-5-METHYLANILINE) (CAS No.: 120-71-8)	mg/kg	With reference to LFGB 82.02-2. Analysis was performed by GC/MS.	n.d.	3
15): 4,4'-METHYLENE-BIS-(2-CHLOROANILINE) (CAS No.: 101-14-4)	mg/kg	With reference to LFGB 82.02-2. Analysis was performed by GC/MS.	n.d.	3
16): 4,4'-OXYDIANILINE (CAS No.: 101-80-4)	mg/kg	With reference to LFGB 82.02-2. Analysis was performed by GC/MS.	n.d.	3
17): 4,4'-THIODIANILINE (CAS No.:139-65-1)	mg/kg	With reference to LFGB 82.02-2. Analysis was performed by GC/MS.	n.d.	3
18): O-TOLUIDINE (CAS No.: 95-53-4)	mg/kg	With reference to LFGB 82.02-2. Analysis was performed by GC/MS.	n.d.	3
19): 2,4-TOLUYLENEDIAMINE (CAS No.: 95-80-7)	mg/kg	With reference to LFGB 82.02-2. Analysis was performed by GC/MS.	n.d.	3
20): 2,4,5-TRIMETHYLANILINE (CAS No.: 137-17-7)	mg/kg	With reference to LFGB 82.02-2. Analysis was performed by GC/MS.	n.d.	3
21): O-ANISIDINE (CAS No.: 90-04-0)	mg/kg	With reference to LFGB 82.02-2. Analysis was performed by GC/MS.	n.d.	3
22): P-AMINOAZOBENZENE (CAS No.: 60-09-3)	mg/kg	With reference to LFGB 82.02-2. Analysis was performed by GC/MS.	n.d.	3
23): 2,4-XYLIDINE (CAS No.: 95-68-1)	mg/kg	With reference to LFGB 82.02-2. Analysis was performed by GC/MS.	n.d.	3
24): 2,6-XYLIDINE (CAS No.: 87-62-7)	mg/kg	With reference to LFGB 82.02-2. Analysis was performed by GC/MS.	n.d.	3

Test Location: 26 Ayer Rajah Crescent, #07-08, Singapore 139944

This document is issued by the Company under its General Conditions of Service accessible at www.sgs.com/terms_and_conditions.htm and, for electronic format documents, subject to Terms and Conditions for Electronic Documents at www.sgs.com/terms_e-document.htm. Attention is drawn to the limitation of liability, indemnification and jurisdiction issues defined therein. Any holder of this document is advised that information contained hereon reflects the Company's findings at the time of its intervention only and within the limits of Client's instructions, if any. The Company's sole responsibility is to its Client and this document does not exonerate parties to a transaction from exercising all their rights and obligations under the transaction documents. Any unauthorized alteration, forgery or falsification of the content or appearance of this document is unlawful and offenders may be prosecuted to the fullest extent of the law. Unless otherwise stated the results shown in this test report refer only to the sample(s) tested and such sample(s) are retained for 30 days only. This document cannot be reproduced except in full, without prior approval of the Company.

Test Result(s):

Sample Description : Ink (stencil ink)

Test Item(s):	Unit	Method	Results	MDL
CFC's (Chlorofluorocarbons) Group I*				
Chlorofluorocarbon-11 (CAS No.: 75-69-4)	mg/kg	With reference to US EPA 5021 method. Analysis was performed by GC/MS.	n.d.	1
Chlorofluorocarbon-12 (CAS No.: 75-71-8)	mg/kg	With reference to US EPA 5021 method. Analysis was performed by GC/MS.	n.d.	1
Chlorofluorocarbon-113 (CAS No.: 76-13-1)	mg/kg	With reference to US EPA 5021 method. Analysis was performed by GC/MS.	n.d.	1
Chlorofluorocarbon-114 (CAS No.: 76-14-2)	mg/kg	With reference to US EPA 5021 method. Analysis was performed by GC/MS.	n.d.	1
Chlorofluorocarbon-115 (CAS No.: 76-15-3)	mg/kg	With reference to US EPA 5021 method. Analysis was performed by GC/MS.	n.d.	1
CFC's (Chlorofluorocarbons) Group III*				
Chlorofluorocarbon-13 (CAS No.: 75-72-9)	mg/kg	With reference to US EPA 5021 method. Analysis was performed by GC/MS.	n.d.	1
Chlorofluorocarbon-111 (CAS No.: 354-56-3)	mg/kg	With reference to US EPA 5021 method. Analysis was performed by GC/MS.	n.d.	1
Chlorofluorocarbon-112 (CAS No.: 76-12-0)	mg/kg	With reference to US EPA 5021 method. Analysis was performed by GC/MS.	n.d.	1
Chlorofluorocarbon-211 (CAS No.: 422-78-6)	mg/kg	With reference to US EPA 5021 method. Analysis was performed by GC/MS.	n.d.	1
Chlorofluorocarbon-212 (CAS No.: 3182-26-1)	mg/kg	With reference to US EPA 5021 method. Analysis was performed by GC/MS.	n.d.	1
Chlorofluorocarbon-213 (CAS No.: 2354-06-5)	mg/kg	With reference to US EPA 5021 method. Analysis was performed by GC/MS.	n.d.	1
Chlorofluorocarbon-214 (CAS No.: 29255-31-0)	mg/kg	With reference to US EPA 5021 method. Analysis was performed by GC/MS.	n.d.	1
Chlorofluorocarbon-215 (CAS No.: 4259-43-2)	mg/kg	With reference to US EPA 5021 method. Analysis was performed by GC/MS.	n.d.	1

Test Location: 26 Ayer Rajah Crescent, #07-08, Singapore 139944

This document is issued by the Company under its General Conditions of Service accessible at www.sgs.com/terms_and_conditions.htm and, for electronic format documents, subject to Terms and Conditions for Electronic Documents at www.sgs.com/terms_e-document.htm. Attention is drawn to the limitation of liability, indemnification and jurisdiction issues defined therein. Any holder of this document is advised that information contained hereon reflects the Company's findings at the time of its intervention only and within the limits of Client's instructions, if any. The Company's sole responsibility is to its Client and this document does not exonerate parties to a transaction from exercising all their rights and obligations under the transaction documents. Any unauthorized alteration, forgery or falsification of the content or appearance of this document is unlawful and offenders may be prosecuted to the fullest extent of the law. Unless otherwise stated the results shown in this test report refer only to the sample(s) tested and such sample(s) are retained for 30 days only. This document cannot be reproduced except in full, without prior approval of the Company.

Test Result(s):

Sample Description : Ink (stencil ink)

Test Item(s):	Unit	Method	Results	MDL
Chlorofluorocarbon-216 (CAS No.: 661-97-2)	mg/kg	With reference to US EPA 5021 method. Analysis was performed by GC/MS.	n.d.	1
Chlorofluorocarbon-217 (CAS No.: 422-86-6)	mg/kg	With reference to US EPA 5021 method. Analysis was performed by GC/MS.	n.d.	1
HCFC's (Hydrogenated chlorofluorocarbons)*				
Hydrochlorofluorocarbon-21 (CAS No.: 75-43-4)	mg/kg	With reference to US EPA 5021 method. Analysis was performed by GC/MS.	n.d.	1
Hydrochlorofluorocarbon-22 (CAS No.: 75-45-6)	mg/kg	With reference to US EPA 5021 method. Analysis was performed by GC/MS.	n.d.	1
Hydrochlorofluorocarbon-31 (CAS No.: 593-70-4)	mg/kg	With reference to US EPA 5021 method. Analysis was performed by GC/MS.	n.d.	1
Hydrochlorofluorocarbon-121 (CAS No.:354-14-3)	mg/kg	With reference to US EPA 5021 method. Analysis was performed by GC/MS.	n.d.	1
Hydrochlorofluorocarbon-122 (CAS No.: 354-21-2)	mg/kg	With reference to US EPA 5021 method. Analysis was performed by GC/MS.	n.d.	1
Hydrochlorofluorocarbon-123 (CAS No.: 306-83-2)	mg/kg	With reference to US EPA 5021 method. Analysis was performed by GC/MS.	n.d.	1
Hydrochlorofluorocarbon-124 (CAS No.: 2837-89-0)	mg/kg	With reference to US EPA 5021 method. Analysis was performed by GC/MS.	n.d.	1
Hydrochlorofluorocarbon-131 (CAS No.: 359-28-4)	mg/kg	With reference to US EPA 5021 method. Analysis was performed by GC/MS.	n.d.	1
Hydrochlorofluorocarbon-132b (CAS No.: 1649-08-7)	mg/kg	With reference to US EPA 5021 method. Analysis was performed by GC/MS.	n.d.	1
Hydrochlorofluorocarbon-133a (CAS No.:75-88-7)	mg/kg	With reference to US EPA 5021 method. Analysis was performed by GC/MS.	n.d.	1
Hydrochlorofluorocarbon-141b (CAS No.: 1717-00-6)	mg/kg	With reference to US EPA 5021 method. Analysis was performed by GC/MS.	n.d.	1

Test Location: 26 Ayer Rajah Crescent, #07-08, Singapore 139944

This document is issued by the Company under its General Conditions of Service accessible at www.sgs.com/terms_and_conditions.htm and, for electronic format documents, subject to Terms and Conditions for Electronic Documents at www.sgs.com/terms_e-document.htm. Attention is drawn to the limitation of liability, indemnification and jurisdiction issues defined therein. Any holder of this document is advised that information contained hereon reflects the Company's findings at the time of its intervention only and within the limits of Client's instructions, if any. The Company's sole responsibility is to its Client and this document does not exonerate parties to a transaction from exercising all their rights and obligations under the transaction documents. Any unauthorized alteration, forgery or falsification of the content or appearance of this document is unlawful and offenders may be prosecuted to the fullest extent of the law. Unless otherwise stated the results shown in this test report refer only to the sample(s) tested and such sample(s) are retained for 30 days only. This document cannot be reproduced except in full, without prior approval of the Company.

Test Result(s):

Sample Description : Ink (stencil ink)

Test Item(s):	Unit	Method	Results	MDL
Hydrochlorofluorocarbon-142b (CAS No.:75-68-3)	mg/kg	With reference to US EPA 5021 method. Analysis was performed by GC/MS.	n.d.	1
Hydrochlorofluorocarbon-221 (CAS No.:422-26-4)	mg/kg	With reference to US EPA 5021 method. Analysis was performed by GC/MS.	n.d.	1
Hydrochlorofluorocarbon-222 (CAS No.: 422-49-1)	mg/kg	With reference to US EPA 5021 method. Analysis was performed by GC/MS.	n.d.	1
Hydrochlorofluorocarbon-223 (CAS No.: 422-52-6)	mg/kg	With reference to US EPA 5021 method. Analysis was performed by GC/MS.	n.d.	1
Hydrochlorofluorocarbon-224 (CAS No.:422-54-8)	mg/kg	With reference to US EPA 5021 method. Analysis was performed by GC/MS.	n.d.	1
Hydrochlorofluorocarbon-225ca (CAS No.: 422-56-0)	mg/kg	With reference to US EPA 5021 method. Analysis was performed by GC/MS.	n.d.	1
Hydrochlorofluorocarbon-225cb (CAS No.: 507-55-1)	mg/kg	With reference to US EPA 5021 method. Analysis was performed by GC/MS.	n.d.	1
Hydrochlorofluorocarbon-226 (CAS No.: 431-87-8)	mg/kg	With reference to US EPA 5021 method. Analysis was performed by GC/MS.	n.d.	1
Hydrochlorofluorocarbon-231 (CAS No.: 421-94-3)	mg/kg	With reference to US EPA 5021 method. Analysis was performed by GC/MS.	n.d.	1
Hydrochlorofluorocarbon-232 (CAS No.: 460-89-9)	mg/kg	With reference to US EPA 5021 method. Analysis was performed by GC/MS.	n.d.	1
Hydrochlorofluorocarbon-233 (CAS No.: 7125-84-0)	mg/kg	With reference to US EPA 5021 method. Analysis was performed by GC/MS.	n.d.	1
Hydrochlorofluorocarbon-234 (CAS No.: 425-94-5)	mg/kg	With reference to US EPA 5021 method. Analysis was performed by GC/MS.	n.d.	1
Hydrochlorofluorocarbon-235 (CAS No.: 460-92-4)	mg/kg	With reference to US EPA 5021 method. Analysis was performed by GC/MS.	n.d.	1
Hydrochlorofluorocarbon-241 (CAS No.: 666-27-3)	mg/kg	With reference to US EPA 5021 method. Analysis was performed by GC/MS.	n.d.	1

Test Location: 26 Ayer Rajah Crescent, #07-08, Singapore 139944

This document is issued by the Company under its General Conditions of Service accessible at www.sgs.com/terms_and_conditions.htm and, for electronic format documents, subject to Terms and Conditions for Electronic Documents at www.sgs.com/terms_e-document.htm. Attention is drawn to the limitation of liability, indemnification and jurisdiction issues defined therein. Any holder of this document is advised that information contained hereon reflects the Company's findings at the time of its intervention only and within the limits of Client's instructions, if any. The Company's sole responsibility is to its Client and this document does not exonerate parties to a transaction from exercising all their rights and obligations under the transaction documents. Any unauthorized alteration, forgery or falsification of the content or appearance of this document is unlawful and offenders may be prosecuted to the fullest extent of the law. Unless otherwise stated the results shown in this test report refer only to the sample(s) tested and such sample(s) are retained for 30 days only. This document cannot be reproduced except in full, without prior approval of the Company.

Test Result(s):

Sample Description : Ink (stencil ink)

Test Item(s):	Unit	Method	Results	MDL
Hydrochlorofluorocarbon-242 (CAS No.: 460-63-9)	mg/kg	With reference to US EPA 5021 method. Analysis was performed by GC/MS.	n.d.	1
Hydrochlorofluorocarbon-243 (CAS No.: 460-69-5)	mg/kg	With reference to US EPA 5021 method. Analysis was performed by GC/MS.	n.d.	1
Hydrochlorofluorocarbon-244	mg/kg	With reference to US EPA 5021 method. Analysis was performed by GC/MS.	n.d.	1
Hydrochlorofluorocarbon-251 (CAS No.: 421-41-0)	mg/kg	With reference to US EPA 5021 method. Analysis was performed by GC/MS.	n.d.	1
Hydrochlorofluorocarbon-252 (CAS No.: 819-00-1)	mg/kg	With reference to US EPA 5021 method. Analysis was performed by GC/MS.	n.d.	1
Hydrochlorofluorocarbon-253 (CAS No.: 460-35-5)	mg/kg	With reference to US EPA 5021 method. Analysis was performed by GC/MS.	n.d.	1
Hydrochlorofluorocarbon-261 (CAS No.: 420-97-3)	mg/kg	With reference to US EPA 5021 method. Analysis was performed by GC/MS.	n.d.	1
Hydrochlorofluorocarbon-262 (CAS No.: 421-02-03)	mg/kg	With reference to US EPA 5021 method. Analysis was performed by GC/MS.	n.d.	1
Hydrochlorofluorocarbon-271 (CAS No.: 430-55-7)	mg/kg	With reference to US EPA 5021 method. Analysis was performed by GC/MS.	n.d.	1
Halons *				
Halon-1211 (CAS No.: 353-59-3)	mg/kg	With reference to US EPA 5021 method. Analysis was performed by GC/MS.	n.d.	1
Halon-1301 (CAS No.: 75-63-8)	mg/kg	With reference to US EPA 5021 method. Analysis was performed by GC/MS.	n.d.	1
Halon-2402 (CAS No.: 124-73-2)	mg/kg	With reference to US EPA 5021 method. Analysis was performed by GC/MS.	n.d.	1

Test Location: 26 Ayer Rajah Crescent, #07-08, Singapore 139944

This document is issued by the Company under its General Conditions of Service accessible at www.sgs.com/terms_and_conditions.htm and, for electronic format documents, subject to Terms and Conditions for Electronic Documents at www.sgs.com/terms_e-document.htm. Attention is drawn to the limitation of liability, indemnification and jurisdiction issues defined therein. Any holder of this document is advised that information contained hereon reflects the Company's findings at the time of its intervention only and within the limits of Client's instructions, if any. The Company's sole responsibility is to its Client and this document does not exonerate parties to a transaction from exercising all their rights and obligations under the transaction documents. Any unauthorized alteration, forgery or falsification of the content or appearance of this document is unlawful and offenders may be prosecuted to the fullest extent of the law. Unless otherwise stated the results shown in this test report refer only to the sample(s) tested and such sample(s) are retained for 30 days only. This document cannot be reproduced except in full, without prior approval of the Company.

Test Result(s):

Sample Description : Ink (stencil ink)

Test Item(s):	Unit	Method	Results	MDL
HBFC's (Hydrogenated bromofluorocarbons)*				
HBFC-21B2 (CHFBr ₂) (CAS No.: 1868-53-7)	mg/kg	With reference to US EPA 5021 method. Analysis was performed by GC/MS.	n.d.	1
HBFC-22B1 (CHF ₂ Br) (CAS No.: 1511-62-2)	mg/kg	With reference to US EPA 5021 method. Analysis was performed by GC/MS.	n.d.	1
HBFC-31B1 (CH ₂ FBr) (CAS No.: 373-52-4)	mg/kg	With reference to US EPA 5021 method. Analysis was performed by GC/MS.	n.d.	1
HBFC-121B4 (C ₂ HFBr ₄)	mg/kg	With reference to US EPA 5021 method. Analysis was performed by GC/MS.	n.d.	1
HBFC-122B3 (C ₂ HF ₂ Br ₃)	mg/kg	With reference to US EPA 5021 method. Analysis was performed by GC/MS.	n.d.	1
HBFC-123B2 (C ₂ HF ₃ Br ₂)	mg/kg	With reference to US EPA 5021 method. Analysis was performed by GC/MS.	n.d.	1
HBFC-124B1 (C ₂ HF ₄ Br)	mg/kg	With reference to US EPA 5021 method. Analysis was performed by GC/MS.	n.d.	1
HBFC-131B3 (C ₂ H ₂ FBr ₃)	mg/kg	With reference to US EPA 5021 method. Analysis was performed by GC/MS.	n.d.	1
HBFC-132B2 (C ₂ H ₂ F ₂ Br ₂)	mg/kg	With reference to US EPA 5021 method. Analysis was performed by GC/MS.	n.d.	1
HBFC-133B1 (C ₂ H ₂ F ₃ Br)	mg/kg	With reference to US EPA 5021 method. Analysis was performed by GC/MS.	n.d.	1
HBFC-141B2 (C ₂ H ₃ FBr ₂)	mg/kg	With reference to US EPA 5021 method. Analysis was performed by GC/MS.	n.d.	1
HBFC-142B1 (C ₂ H ₃ F ₂ Br)	mg/kg	With reference to US EPA 5021 method. Analysis was performed by GC/MS.	n.d.	1
HBFC-151B1 (C ₂ H ₄ FBr)	mg/kg	With reference to US EPA 5021 method. Analysis was performed by GC/MS.	n.d.	1

Test Location: 26 Ayer Rajah Crescent, #07-08, Singapore 139944

This document is issued by the Company under its General Conditions of Service accessible at www.sgs.com/terms_and_conditions.htm and, for electronic format documents, subject to Terms and Conditions for Electronic Documents at www.sgs.com/terms_e-document.htm. Attention is drawn to the limitation of liability, indemnification and jurisdiction issues defined therein. Any holder of this document is advised that information contained hereon reflects the Company's findings at the time of its intervention only and within the limits of Client's instructions, if any. The Company's sole responsibility is to its Client and this document does not exonerate parties to a transaction from exercising all their rights and obligations under the transaction documents. Any unauthorized alteration, forgery or falsification of the content or appearance of this document is unlawful and offenders may be prosecuted to the fullest extent of the law. Unless otherwise stated the results shown in this test report refer only to the sample(s) tested and such sample(s) are retained for 30 days only. This document cannot be reproduced except in full, without prior approval of the Company.

Test Result(s):

Sample Description : Ink (stencil ink)

Test Item(s):	Unit	Method	Results	MDL
HBFC-221B6 (C3HFBr6)	mg/kg	With reference to US EPA 5021 method. Analysis was performed by GC/MS.	n.d.	1
HBFC-222B5 (C3HF2Br5)	mg/kg	With reference to US EPA 5021 method. Analysis was performed by GC/MS.	n.d.	1
HBFC-223B4 (C3HF3Br4)	mg/kg	With reference to US EPA 5021 method. Analysis was performed by GC/MS.	n.d.	1
HBFC-224B3 (C3HF4Br3)	mg/kg	With reference to US EPA 5021 method. Analysis was performed by GC/MS.	n.d.	1
HBFC-225B2 (C3HF5Br2)	mg/kg	With reference to US EPA 5021 method. Analysis was performed by GC/MS.	n.d.	1
HBFC-226B1 (C3HF6Br)	mg/kg	With reference to US EPA 5021 method. Analysis was performed by GC/MS.	n.d.	1
HBFC-231B5 (C3H2FBr5)	mg/kg	With reference to US EPA 5021 method. Analysis was performed by GC/MS.	n.d.	1
HBFC-232B4 (C3H2F2Br4)	mg/kg	With reference to US EPA 5021 method. Analysis was performed by GC/MS.	n.d.	1
HBFC-233B3 (C3H2F3Br3)	mg/kg	With reference to US EPA 5021 method. Analysis was performed by GC/MS.	n.d.	1
HBFC-234B2 (C3H2F4Br2)	mg/kg	With reference to US EPA 5021 method. Analysis was performed by GC/MS.	n.d.	1
HBFC-235B1 (C3H2F5Br)	mg/kg	With reference to US EPA 5021 method. Analysis was performed by GC/MS.	n.d.	1
HBFC-241B4 (C3H3FBr4)	mg/kg	With reference to US EPA 5021 method. Analysis was performed by GC/MS.	n.d.	1
HBFC-242B3 (C3H3F2Br3)	mg/kg	With reference to US EPA 5021 method. Analysis was performed by GC/MS.	n.d.	1

Test Location: 26 Ayer Rajah Crescent, #07-08, Singapore 139944

This document is issued by the Company under its General Conditions of Service accessible at www.sgs.com/terms_and_conditions.htm and, for electronic format documents, subject to Terms and Conditions for Electronic Documents at www.sgs.com/terms_e-document.htm. Attention is drawn to the limitation of liability, indemnification and jurisdiction issues defined therein. Any holder of this document is advised that information contained hereon reflects the Company's findings at the time of its intervention only and within the limits of Client's instructions, if any. The Company's sole responsibility is to its Client and this document does not exonerate parties to a transaction from exercising all their rights and obligations under the transaction documents. Any unauthorized alteration, forgery or falsification of the content or appearance of this document is unlawful and offenders may be prosecuted to the fullest extent of the law. Unless otherwise stated the results shown in this test report refer only to the sample(s) tested and such sample(s) are retained for 30 days only. This document cannot be reproduced except in full, without prior approval of the Company.

Test Result(s):

Sample Description : Ink (stencil ink)

Test Item(s):	Unit	Method	Results	MDL
HBFC-243B2 (C3H3F3Br2)	mg/kg	With reference to US EPA 5021 method. Analysis was performed by GC/MS.	n.d.	1
HBFC-244B1 (C3H3F4Br)	mg/kg	With reference to US EPA 5021 method. Analysis was performed by GC/MS.	n.d.	1
HBFC-251B3 (C3H4FBr3)	mg/kg	With reference to US EPA 5021 method. Analysis was performed by GC/MS.	n.d.	1
HBFC-252B2 (C3H4F2Br2)	mg/kg	With reference to US EPA 5021 method. Analysis was performed by GC/MS.	n.d.	1
HBFC-253B1 (C3H4F3Br)	mg/kg	With reference to US EPA 5021 method. Analysis was performed by GC/MS.	n.d.	1
HBFC-261B2 (C3H5FBr2)	mg/kg	With reference to US EPA 5021 method. Analysis was performed by GC/MS.	n.d.	1
HBFC-262B1 (C3H5F2Br)	mg/kg	With reference to US EPA 5021 method. Analysis was performed by GC/MS.	n.d.	1
HBFC-271B1 (C3H6FBr)	mg/kg	With reference to US EPA 5021 method. Analysis was performed by GC/MS.	n.d.	1
Hydrofluorcarbon, fluorinated hydrocarbon, fluorohydrocarbon (HFC)*				
HFC-23 (CHF3) (CAS No.: 75-46-7)	mg/kg	With reference to US EPA 5021 method. Analysis was performed by GC/MS.	n.d.	1
HFC-32 (CH2F2) (CAS No.: 75-10-5)	mg/kg	With reference to US EPA 5021 method. Analysis was performed by GC/MS.	n.d.	1
HFC-41 (CH3F) (CAS No.: 59-53-3)	mg/kg	With reference to US EPA 5021 method. Analysis was performed by GC/MS.	n.d.	1
HFC-43-10mee (C5H2F10)	mg/kg	With reference to US EPA 5021 method. Analysis was performed by GC/MS.	n.d.	1
HFC-125 (C2HF5)	mg/kg	With reference to US EPA 5021 method. Analysis was performed by GC/MS.	n.d.	1

Test Location: 26 Ayer Rajah Crescent, #07-08, Singapore 139944

This document is issued by the Company under its General Conditions of Service accessible at www.sgs.com/terms_and_conditions.htm and, for electronic format documents, subject to Terms and Conditions for Electronic Documents at www.sgs.com/terms_e-document.htm. Attention is drawn to the limitation of liability, indemnification and jurisdiction issues defined therein. Any holder of this document is advised that information contained hereon reflects the Company's findings at the time of its intervention only and within the limits of Client's instructions, if any. The Company's sole responsibility is to its Client and this document does not exonerate parties to a transaction from exercising all their rights and obligations under the transaction documents. Any unauthorized alteration, forgery or falsification of the content or appearance of this document is unlawful and offenders may be prosecuted to the fullest extent of the law. Unless otherwise stated the results shown in this test report refer only to the sample(s) tested and such sample(s) are retained for 30 days only. This document cannot be reproduced except in full, without prior approval of the Company.

Test Result(s):

Sample Description : Ink (stencil ink)

Test Item(s):	Unit	Method	Results	MDL
HFC-134 (C2H2F4)	mg/kg	With reference to US EPA 5021 method. Analysis was performed by GC/MS.	n.d.	1
HFC-134a (CH2FCF3) (CAS No.: 811-97-2)	mg/kg	With reference to US EPA 5021 method. Analysis was performed by GC/MS.	n.d.	1
HFC-143 (CH3F3)	mg/kg	With reference to US EPA 5021 method. Analysis was performed by GC/MS.	n.d.	1
HFC-143a (CH3F3)	mg/kg	With reference to US EPA 5021 method. Analysis was performed by GC/MS.	n.d.	1
HFC-152a (C2H4F2) (CAS No.: 75-37-6)	mg/kg	With reference to US EPA 5021 method. Analysis was performed by GC/MS.	n.d.	1
HFC-227ea (C3HF7) (CAS No.: 431-89-0)	mg/kg	With reference to US EPA 5021 method. Analysis was performed by GC/MS.	n.d.	1
HFC-236fa (C3H2F6)	mg/kg	With reference to US EPA 5021 method. Analysis was performed by GC/MS.	n.d.	1
HFC-236ea (C3H2F6) (CAS No.: 431-63-0)	mg/kg	With reference to US EPA 5021 method. Analysis was performed by GC/MS.	n.d.	1
HFC-245ca (C3H3F5)	mg/kg	With reference to US EPA 5021 method. Analysis was performed by GC/MS.	n.d.	1
HFC-245fa (C3H3F5)	mg/kg	With reference to US EPA 5021 method. Analysis was performed by GC/MS.	n.d.	1
HFC-365mfc (C4H5F5)	mg/kg	With reference to US EPA 5021 method. Analysis was performed by GC/MS.	n.d.	1

Test Location: 26 Ayer Rajah Crescent, #07-08, Singapore 139944

This document is issued by the Company under its General Conditions of Service accessible at www.sgs.com/terms_and_conditions.htm and, for electronic format documents, subject to Terms and Conditions for Electronic Documents at www.sgs.com/terms_e-document.htm. Attention is drawn to the limitation of liability, indemnification and jurisdiction issues defined therein. Any holder of this document is advised that information contained hereon reflects the Company's findings at the time of its intervention only and within the limits of Client's instructions, if any. The Company's sole responsibility is to its Client and this document does not exonerate parties to a transaction from exercising all their rights and obligations under the transaction documents. Any unauthorized alteration, forgery or falsification of the content or appearance of this document is unlawful and offenders may be prosecuted to the fullest extent of the law. Unless otherwise stated the results shown in this test report refer only to the sample(s) tested and such sample(s) are retained for 30 days only. This document cannot be reproduced except in full, without prior approval of the Company.

Test Result(s):

Sample Description : Ink (stencil ink)

Test Item(s):	Unit	Method	Results	MDL
Perfluorocarbon (PFC)*				
F14 (CAS No.: 75-73-0)	mg/kg	With reference to US EPA 5021 method. Analysis was performed by GC/MS.	n.d.	1
Fluorocarbon 116 (CAS No.: 76-16-4)	mg/kg	With reference to US EPA 5021 method. Analysis was performed by GC/MS.	n.d.	1
Freon 218 (CAS No.: 76-19-7)	mg/kg	With reference to US EPA 5021 method. Analysis was performed by GC/MS.	n.d.	1
Decafluorobutane (CAS No.: 355-25-9)	mg/kg	With reference to US EPA 5021 method. Analysis was performed by GC/MS.	n.d.	1
Freon C318 (CAS No.: 115-25-3)	mg/kg	With reference to US EPA 5021 method. Analysis was performed by GC/MS.	n.d.	1
Perfluor-1-butene (CAS No.: 357-26-6)	mg/kg	With reference to US EPA 5021 method. Analysis was performed by GC/MS.	n.d.	1
Perfluorisobutene (CAS No.: 382-21-8)	mg/kg	With reference to US EPA 5021 method. Analysis was performed by GC/MS.	n.d.	1
1,4-dihydroctafluorobutane (CAS No.: 377-36-6)	mg/kg	With reference to US EPA 5021 method. Analysis was performed by GC/MS.	n.d.	1
Nonafluor-2- (trifluorpmethyl)butane (CAS No.: 594-91-2)	mg/kg	With reference to US EPA 5021 method. Analysis was performed by GC/MS.	n.d.	1
Perfluoro-n-pentane (CAS No.: 678-26-2)	mg/kg	With reference to US EPA 5021 method. Analysis was performed by GC/MS.	n.d.	1
2-perfluoromethylpentane (CAS No.: 000355-04-4)	mg/kg	With reference to US EPA 5021 method. Analysis was performed by GC/MS.	n.d.	1
Perfluorohexane (CAS No.: 000355-42-0)	mg/kg	With reference to US EPA 5021 method. Analysis was performed by GC/MS.	n.d.	1

Test Location: 26 Ayer Rajah Crescent, #07-08, Singapore 139944

This document is issued by the Company under its General Conditions of Service accessible at www.sgs.com/terms_and_conditions.htm and, for electronic format documents, subject to Terms and Conditions for Electronic Documents at www.sgs.com/terms_e-document.htm. Attention is drawn to the limitation of liability, indemnification and jurisdiction issues defined therein. Any holder of this document is advised that information contained hereon reflects the Company's findings at the time of its intervention only and within the limits of Client's instructions, if any. The Company's sole responsibility is to its Client and this document does not exonerate parties to a transaction from exercising all their rights and obligations under the transaction documents. Any unauthorized alteration, forgery or falsification of the content or appearance of this document is unlawful and offenders may be prosecuted to the fullest extent of the law. Unless otherwise stated the results shown in this test report refer only to the sample(s) tested and such sample(s) are retained for 30 days only. This document cannot be reproduced except in full, without prior approval of the Company.

Test Result(s):

Sample Description : Ink (stencil ink)

Test Item(s):	Unit	Method	Results	MDL
CHC's (Chlorinated hydrocarbon)*				
1,1,1,2-Tetrachloroethane (CAS No.: 630-20-6)	mg/kg	With reference to US EPA 5021 method. Analysis was performed by GC/MS.	n.d.	1
1,1,1-Trichloroethane (CAS No.: 71-55-6)	mg/kg	With reference to US EPA 5021 method. Analysis was performed by GC/MS.	n.d.	1
1,1,2,2-Tetrachloroethane (CAS No.: 79-34-5)	mg/kg	With reference to US EPA 5021 method. Analysis was performed by GC/MS.	n.d.	1
1,1,2-Trichloroethane (CAS No.: 79-00-5)	mg/kg	With reference to US EPA 5021 method. Analysis was performed by GC/MS.	n.d.	1
1,1-Dichloroethane (CAS No.: 75-34-3)	mg/kg	With reference to US EPA 5021 method. Analysis was performed by GC/MS.	n.d.	1
1,1-Dichloroethene (CAS No.: 75-35-4)	mg/kg	With reference to US EPA 5021 method. Analysis was performed by GC/MS.	n.d.	1
1,1-Dichloropropene (CAS No.: 000563-58-6)	mg/kg	With reference to US EPA 5021 method. Analysis was performed by GC/MS.	n.d.	1
1,2,3-Trichloropropane (CAS No.: 96-18-4)	mg/kg	With reference to US EPA 5021 method. Analysis was performed by GC/MS.	n.d.	1
1,2-Dichloroethane (CAS No.: 107-06-2)	mg/kg	With reference to US EPA 5021 method. Analysis was performed by GC/MS.	n.d.	1
1,2-Dichloropropane (CAS No.: 78-87-5)	mg/kg	With reference to US EPA 5021 method. Analysis was performed by GC/MS.	n.d.	1
1,3-Dichloropropane (CAS No.: 142-28-9)	mg/kg	With reference to US EPA 5021 method. Analysis was performed by GC/MS.	n.d.	1
2,2-Dichloropropane (CAS No.: 594-20-7)	mg/kg	With reference to US EPA 5021 method. Analysis was performed by GC/MS.	n.d.	1
Carbon tetrachloride (CAS No.: 56-23-5)	mg/kg	With reference to US EPA 5021 method. Analysis was performed by GC/MS.	n.d.	1

Test Location: 26 Ayer Rajah Crescent, #07-08, Singapore 139944

This document is issued by the Company under its General Conditions of Service accessible at www.sgs.com/terms_and_conditions.htm and, for electronic format documents, subject to Terms and Conditions for Electronic Documents at www.sgs.com/terms_e-document.htm. Attention is drawn to the limitation of liability, indemnification and jurisdiction issues defined therein. Any holder of this document is advised that information contained hereon reflects the Company's findings at the time of its intervention only and within the limits of Client's instructions, if any. The Company's sole responsibility is to its Client and this document does not exonerate parties to a transaction from exercising all their rights and obligations under the transaction documents. Any unauthorized alteration, forgery or falsification of the content or appearance of this document is unlawful and offenders may be prosecuted to the fullest extent of the law. Unless otherwise stated the results shown in this test report refer only to the sample(s) tested and such sample(s) are retained for 30 days only. This document cannot be reproduced except in full, without prior approval of the Company.

Test Result(s):

Sample Description : Ink (stencil ink)

Test Item(s):	Unit	Method	Results	MDL
Chloroethane (CAS No.: 75-00-3)	mg/kg	With reference to US EPA 5021 method. Analysis was performed by GC/MS.	n.d.	1
Chloroform (CAS No.: 67-66-3)	mg/kg	With reference to US EPA 5021 method. Analysis was performed by GC/MS.	n.d.	1
Chloromethane (CAS No.: 74-87-3)	mg/kg	With reference to US EPA 5021 method. Analysis was performed by GC/MS.	n.d.	1
Cis-1,2-Dichloroethene (CAS No.: 156-59-2)	mg/kg	With reference to US EPA 5021 method. Analysis was performed by GC/MS.	n.d.	1
Cis-1,3-Dichloropropene (CAS No.: 10061-01-5)	mg/kg	With reference to US EPA 5021 method. Analysis was performed by GC/MS.	n.d.	1
Hexachlorobutadiene (CAS No.: 87-68-3)	mg/kg	With reference to US EPA 5021 method. Analysis was performed by GC/MS.	n.d.	1
Methylene Chloride (CAS No.: 75-09-2)	mg/kg	With reference to US EPA 5021 method. Analysis was performed by GC/MS.	n.d.	1
Tetrachloroethene (CAS No.: 127-18-4)	mg/kg	With reference to US EPA 5021 method. Analysis was performed by GC/MS.	n.d.	1
trans-1,2-Dichloroethene (CAS No.: 156-60-5)	mg/kg	With reference to US EPA 5021 method. Analysis was performed by GC/MS.	n.d.	1
trans-1,3-Dichloropropene (CAS No.:10061-02-6)	mg/kg	With reference to US EPA 5021 method. Analysis was performed by GC/MS.	n.d.	1
Trichloroethylene (CAS No.: 79-01-6)	mg/kg	With reference to US EPA 5021 method. Analysis was performed by GC/MS.	n.d.	1

Test Location: 26 Ayer Rajah Crescent, #07-08, Singapore 139944

This document is issued by the Company under its General Conditions of Service accessible at www.sgs.com/terms_and_conditions.htm and, for electronic format documents, subject to Terms and Conditions for Electronic Documents at www.sgs.com/terms_e-document.htm. Attention is drawn to the limitation of liability, indemnification and jurisdiction issues defined therein. Any holder of this document is advised that information contained hereon reflects the Company's findings at the time of its intervention only and within the limits of Client's instructions, if any. The Company's sole responsibility is to its Client and this document does not exonerate parties to a transaction from exercising all their rights and obligations under the transaction documents. Any unauthorized alteration, forgery or falsification of the content or appearance of this document is unlawful and offenders may be prosecuted to the fullest extent of the law. Unless otherwise stated the results shown in this test report refer only to the sample(s) tested and such sample(s) are retained for 30 days only. This document cannot be reproduced except in full, without prior approval of the Company.

Test Result(s):

Sample Description : Ink (stencil ink)

Test Item(s):	Unit	Method	Results	MDL
Polychlorinated Biphenyls (PCBs) (CAS No.: 001336-36-3)	mg/kg	With reference to US EPA 3540C method. Analysis was performed by GC/MS.	n.d.	0.5
Polychlorinated Terphenyls (PCTs)	mg/kg	With reference to US EPA 3540C method. Analysis was performed by GC/MS.	n.d.	0.5
Polychlorinated Naphthalene (PCNs)	mg/kg	With reference to US EPA 3540C method. Analysis was performed by GC/MS.	n.d.	5
Chlorinated Paraffin (C10~C13) (CAS No.: 010871-26-2)	%	With reference to US EPA 3540C method. Analysis was performed by GC/MS.	n.d.	0.01
Dimethyl Fumarate (CAS No.: 000624-49-7)	mg/kg	With reference to US EPA 3550C. Analysis was performed by GC/MS.	n.d.	0.1

Note: (1) mg/kg = ppm ; 0.1wt% = 1000ppm
 (2) n.d.= Not Detected
 (3) MDL = Method Detection Limit
 (4) " - " = Not Regulated
 (5) Asbestos : Negative = "< 1.0 %", Positive = "> 1.0 %"
 (6) *** . The substance was calculated by the test results of Tributyl Tin respectively. The MDL was evaluated for Tributyl Tin respectively.

PFOS Reference Information: POPs - (EU) 757/2010

Outlawing PFOS as substances or preparations in concentrations above 0.001% (10ppm), in semi-finished products or articles or parts at a level above 0.1%(1000ppm), in textiles or other coated materials above 1µg/m².

*** Tested by SGS lab (CE/2012/23366)**

Test Location: 26 Ayer Rajah Crescent, #07-08, Singapore 139944

This document is issued by the Company under its General Conditions of Service accessible at www.sgs.com/terms_and_conditions.htm and, for electronic format documents, subject to Terms and Conditions for Electronic Documents at www.sgs.com/terms_e-document.htm. Attention is drawn to the limitation of liability, indemnification and jurisdiction issues defined therein. Any holder of this document is advised that information contained hereon reflects the Company's findings at the time of its intervention only and within the limits of Client's instructions, if any. The Company's sole responsibility is to its Client and this document does not exonerate parties to a transaction from exercising all their rights and obligations under the transaction documents. Any unauthorized alteration, forgery or falsification of the content or appearance of this document is unlawful and offenders may be prosecuted to the fullest extent of the law. Unless otherwise stated the results shown in this test report refer only to the sample(s) tested and such sample(s) are retained for 30 days only. This document cannot be reproduced except in full, without prior approval of the Company.

Sample photo:

Sample Description : Ink (stencil ink)

SGS authenticate the photo on original report only

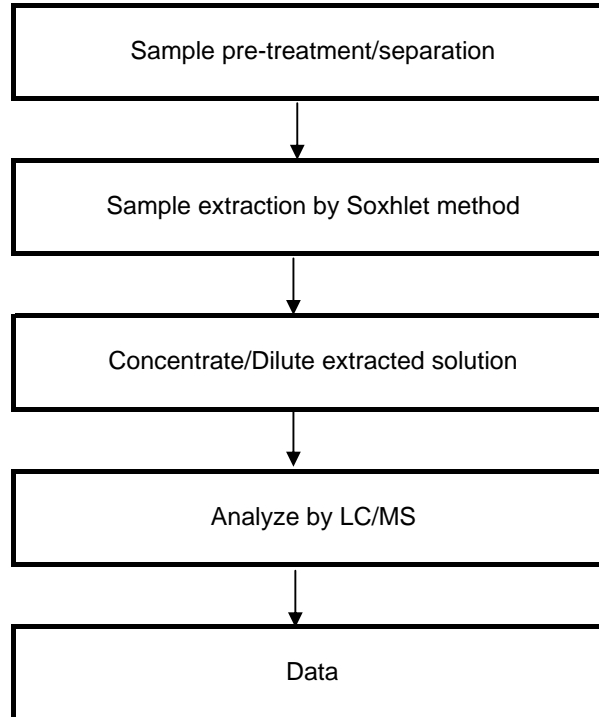


Test Location: 26 Ayer Rajah Crescent, #07-08, Singapore 139944

This document is issued by the Company under its General Conditions of Service accessible at www.sgs.com/terms_and_conditions.htm and, for electronic format documents, subject to Terms and Conditions for Electronic Documents at www.sgs.com/terms_e-document.htm. Attention is drawn to the limitation of liability, indemnification and jurisdiction issues defined therein. Any holder of this document is advised that information contained hereon reflects the Company's findings at the time of its intervention only and within the limits of Client's instructions, if any. The Company's sole responsibility is to its Client and this document does not exonerate parties to a transaction from exercising all their rights and obligations under the transaction documents. Any unauthorized alteration, forgery or falsification of the content or appearance of this document is unlawful and offenders may be prosecuted to the fullest extent of the law. Unless otherwise stated the results shown in this test report refer only to the sample(s) tested and such sample(s) are retained for 30 days only. This document cannot be reproduced except in full, without prior approval of the Company.

Analytical flow chart of Soxhlet extraction (LC/MS) procedure

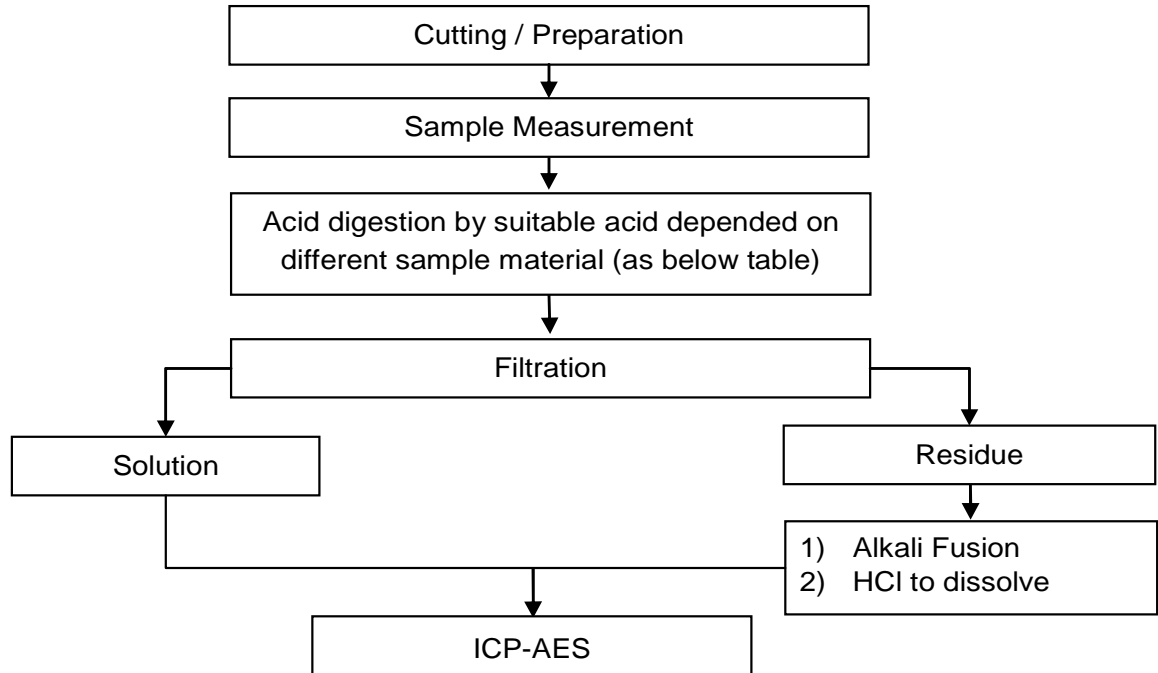
Test Items: PFOS/PFOA, Benzotriazole



Test Location: 26 Ayer Rajah Crescent, #07-08, Singapore 139944

This document is issued by the Company under its General Conditions of Service accessible at www.sgs.com/terms_and_conditions.htm and, for electronic format documents, subject to Terms and Conditions for Electronic Documents at www.sgs.com/terms_e-document.htm. Attention is drawn to the limitation of liability, indemnification and jurisdiction issues defined therein. Any holder of this document is advised that information contained hereon reflects the Company's findings at the time of its intervention only and within the limits of Client's instructions, if any. The Company's sole responsibility is to its Client and this document does not exonerate parties to a transaction from exercising all their rights and obligations under the transaction documents. Any unauthorized alteration, forgery or falsification of the content or appearance of this document is unlawful and offenders may be prosecuted to the fullest extent of the law. Unless otherwise stated the results shown in this test report refer only to the sample(s) tested and such sample(s) are retained for 30 days only. This document cannot be reproduced except in full, without prior approval of the Company.

Flow Chart of digestion for the elements analysis performed by ICP-AES

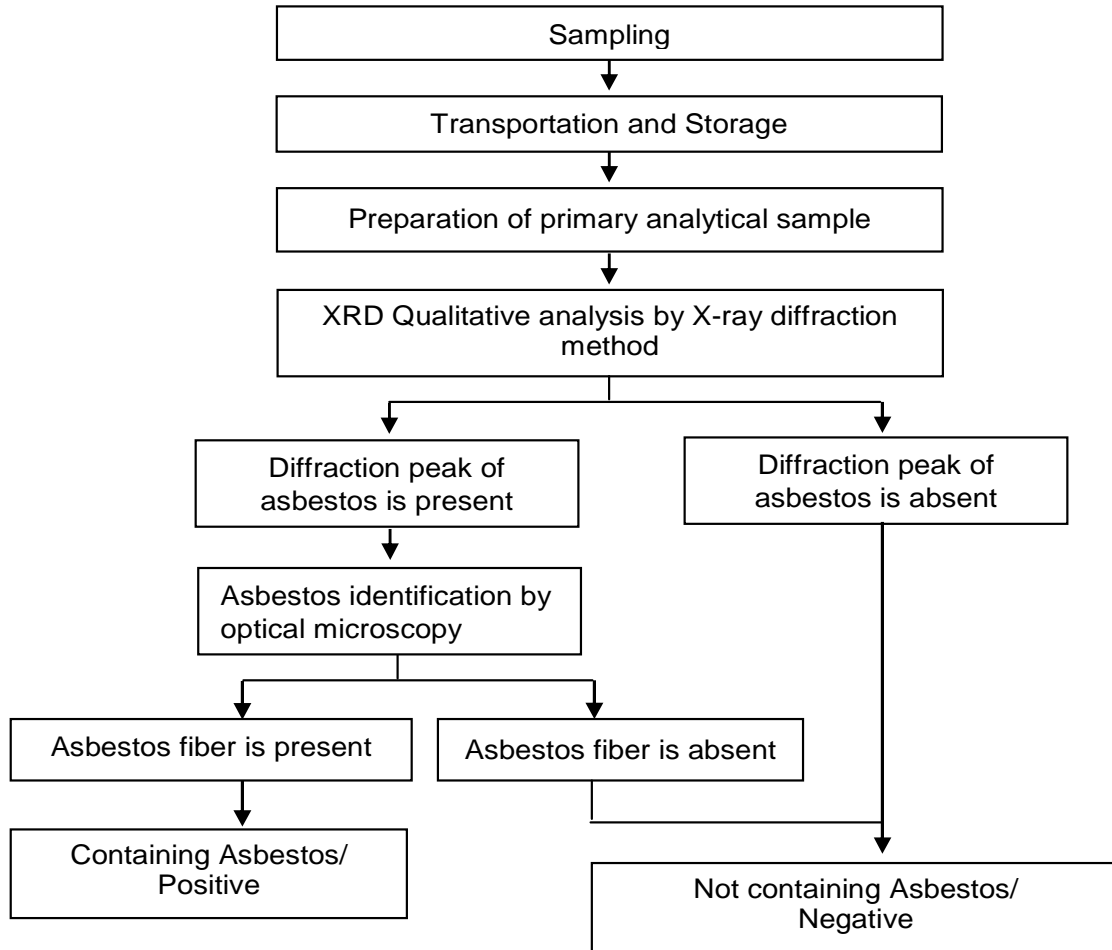


Steel, copper, aluminum, solder	Aqua regia, HNO ₃ , HCl, HF, H ₂ O ₂
Glass	HNO ₃ /HF
Gold, platinum, palladium, ceramic	Aqua regia
Silver	HNO ₃
Plastic	H ₂ SO ₄ , H ₂ O ₂ , HNO ₃ , HCl
Others	Any acid to total digestion

Test Location: 26 Ayer Rajah Crescent, #07-08, Singapore 139944

This document is issued by the Company under its General Conditions of Service accessible at www.sgs.com/terms_and_conditions.htm and, for electronic format documents, subject to Terms and Conditions for Electronic Documents at www.sgs.com/terms_e-document.htm. Attention is drawn to the limitation of liability, indemnification and jurisdiction issues defined therein. Any holder of this document is advised that information contained hereon reflects the Company's findings at the time of its intervention only and within the limits of Client's instructions, if any. The Company's sole responsibility is to its Client and this document does not exonerate parties to a transaction from exercising all their rights and obligations under the transaction documents. Any unauthorized alteration, forgery or falsification of the content or appearance of this document is unlawful and offenders may be prosecuted to the fullest extent of the law. Unless otherwise stated the results shown in this test report refer only to the sample(s) tested and such sample(s) are retained for 30 days only. This document cannot be reproduced except in full, without prior approval of the Company.

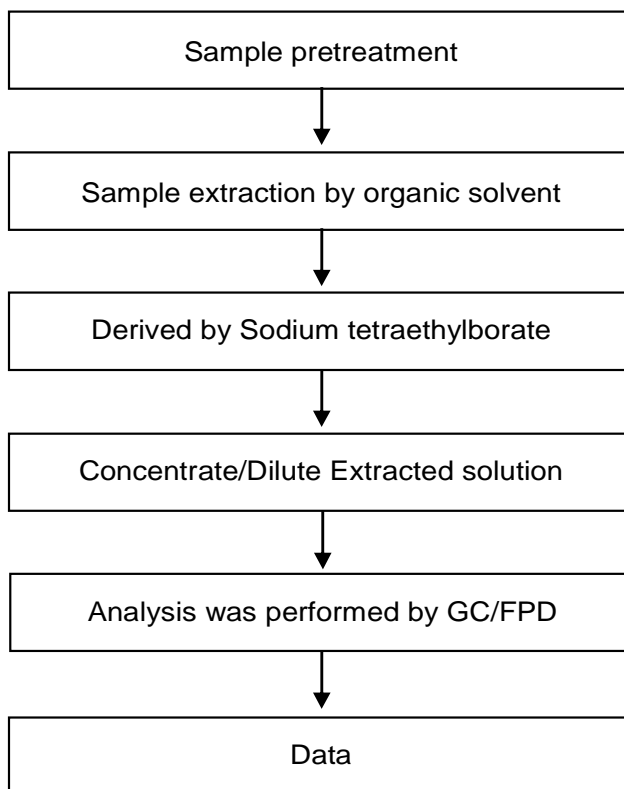
Analysis flow chart for determination of Asbestos



Test Location: 26 Ayer Rajah Crescent, #07-08, Singapore 139944

This document is issued by the Company under its General Conditions of Service accessible at www.sgs.com/terms_and_conditions.htm and, for electronic format documents, subject to Terms and Conditions for Electronic Documents at www.sgs.com/terms_e-document.htm. Attention is drawn to the limitation of liability, indemnification and jurisdiction issues defined therein. Any holder of this document is advised that information contained herein reflects the Company's findings at the time of its intervention only and within the limits of Client's instructions, if any. The Company's sole responsibility is to its Client and this document does not exonerate parties to a transaction from exercising all their rights and obligations under the transaction documents. Any unauthorized alteration, forgery or falsification of the content or appearance of this document is unlawful and offenders may be prosecuted to the fullest extent of the law. Unless otherwise stated the results shown in this test report refer only to the sample(s) tested and such sample(s) are retained for 30 days only. This document cannot be reproduced except in full, without prior approval of the Company.

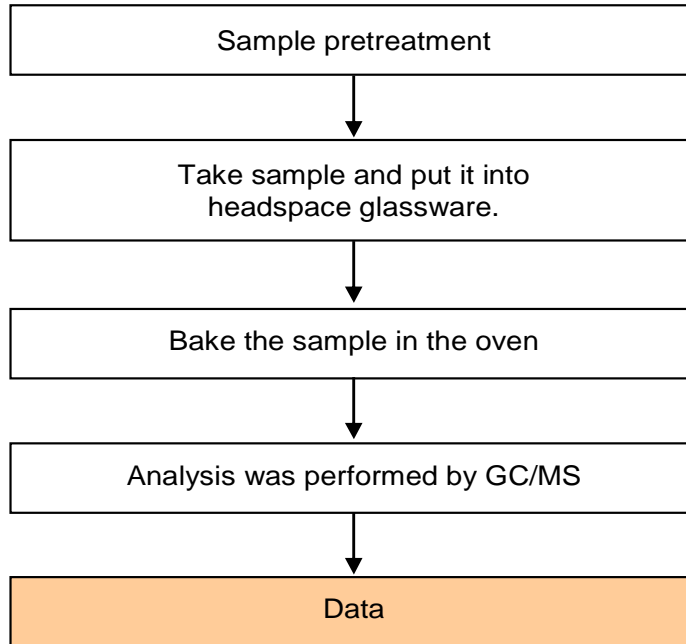
Analytical flow chart of Organic-Tin content



Test Location: 26 Ayer Rajah Crescent, #07-08, Singapore 139944

This document is issued by the Company under its General Conditions of Service accessible at www.sgs.com/terms_and_conditions.htm and, for electronic format documents, subject to Terms and Conditions for Electronic Documents at www.sgs.com/terms_e-document.htm. Attention is drawn to the limitation of liability, indemnification and jurisdiction issues defined therein. Any holder of this document is advised that information contained hereon reflects the Company's findings at the time of its intervention only and within the limits of Client's instructions, if any. The Company's sole responsibility is to its Client and this document does not exonerate parties to a transaction from exercising all their rights and obligations under the transaction documents. Any unauthorized alteration, forgery or falsification of the content or appearance of this document is unlawful and offenders may be prosecuted to the fullest extent of the law. Unless otherwise stated the results shown in this test report refer only to the sample(s) tested and such sample(s) are retained for 30 days only. This document cannot be reproduced except in full, without prior approval of the Company.

Analytical flow chart of volatile organic compounds (VOCs)

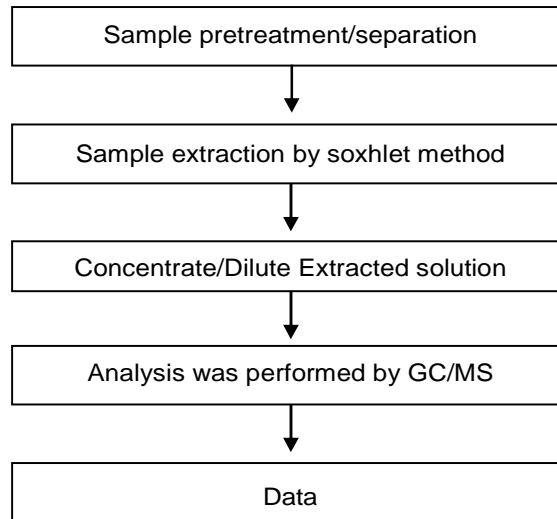


Test Location: 26 Ayer Rajah Crescent, #07-08, Singapore 139944

This document is issued by the Company under its General Conditions of Service accessible at www.sgs.com/terms_and_conditions.htm and, for electronic format documents, subject to Terms and Conditions for Electronic Documents at www.sgs.com/terms_e-document.htm. Attention is drawn to the limitation of liability, indemnification and jurisdiction issues defined therein. Any holder of this document is advised that information contained hereon reflects the Company's findings at the time of its intervention only and within the limits of Client's instructions, if any. The Company's sole responsibility is to its Client and this document does not exonerate parties to a transaction from exercising all their rights and obligations under the transaction documents. Any unauthorized alteration, forgery or falsification of the content or appearance of this document is unlawful and offenders may be prosecuted to the fullest extent of the law. Unless otherwise stated the results shown in this test report refer only to the sample(s) tested and such sample(s) are retained for 30 days only. This document cannot be reproduced except in full, without prior approval of the Company.

Analytical flow chart of Soxhlet extraction (GC/MS) procedure

- Test Items: PCB, PCN,PCT, CP



End of Report

Test Location: 26 Ayer Rajah Crescent, #07-08, Singapore 139944

This document is issued by the Company under its General Conditions of Service accessible at www.sgs.com/terms_and_conditions.htm and, for electronic format documents, subject to Terms and Conditions for Electronic Documents at www.sgs.com/terms_e-document.htm. Attention is drawn to the limitation of liability, indemnification and jurisdiction issues defined therein. Any holder of this document is advised that information contained hereon reflects the Company's findings at the time of its intervention only and within the limits of Client's instructions, if any. The Company's sole responsibility is to its Client and this document does not exonerate parties to a transaction from exercising all their rights and obligations under the transaction documents. Any unauthorized alteration, forgery or falsification of the content or appearance of this document is unlawful and offenders may be prosecuted to the fullest extent of the law. Unless otherwise stated the results shown in this test report refer only to the sample(s) tested and such sample(s) are retained for 30 days only. This document cannot be reproduced except in full, without prior approval of the Company.